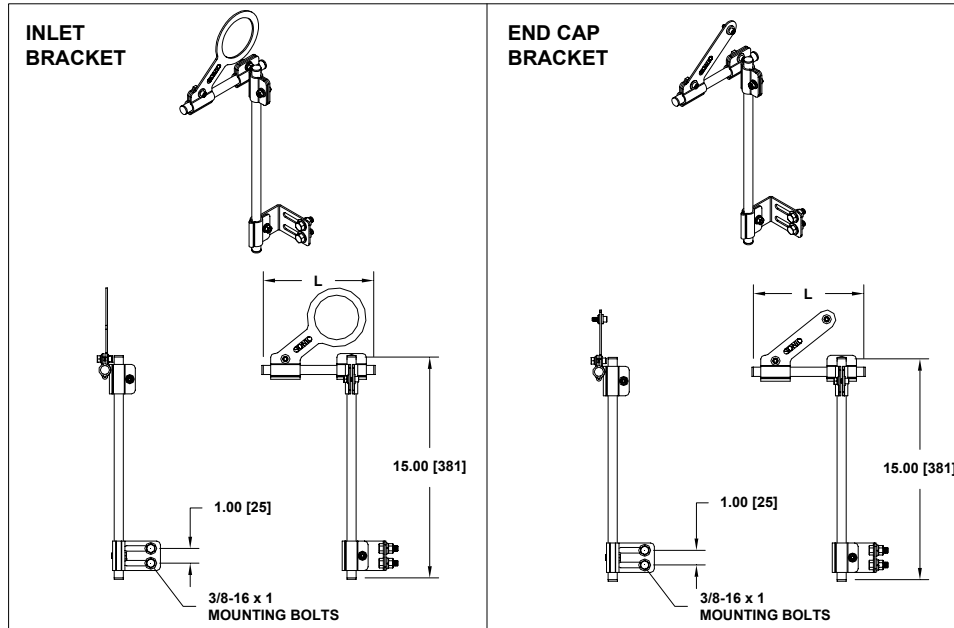


# Component Specification Sheet

## - Air Knife Brackets -

### Interface Dimensions



### Component Specifications

Sonic P/N English / Metric	Description	Material	Finish	Length (L)	End Fitting #1	End Fitting #2	Weight
12624 / 12603	Bracket-2" Nozzle	300 Series SS	#4	7.5 in (191 mm)	Inlet	N/A	3.0 lbs (1.4 kg)
12627 / 13115	Bracket-3" Nozzle	300 Series SS	#4	7.5 in (191 mm)	Inlet	N/A	3.0 lbs (1.4 kg)
12737 / 12636	Bracket-2" or 3" XE Airknife w/ Middle Inlet	300 Series SS	#4	7.5 in (191 mm)	End Cap	End Cap	5.0 lbs (2.3 kg)
12665 / 12622	Bracket-3" XE Airknife	300 Series SS	#4	7.5 in (191 mm)	End Cap	Inlet	5.0 lbs (2.3 kg)
12769 / 12614	Bracket-2" XE Airknife	300 Series SS	#4	7.5 in (191 mm)	End Cap	Inlet	5.2 lbs (2.4 kg)
12662 / 12075	Bracket-3" XE Airknife w/ Extended Supports	300 Series SS	#4	15.0 in (381 mm)	End Cap	Inlet	5.3 lbs (2.4 kg)
12738 / 12645	Bracket-3" XE Airknife w/ Dual Inlets	300 Series SS	#4	7.5 in (191 mm)	Inlet Cap	Inlet	5.0 lbs (2.3 kg)